

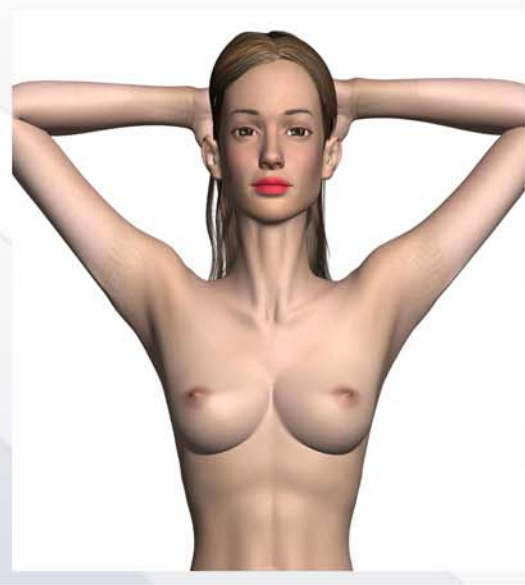
PHOTOS REQUIRED FOR SURGEON ASSESSMENT

- ✓ Good Quality Photos
- ✓ In Focus
- ✓ Good Lighting
- ✓ Clear Plain Background
- ✓ Standing Position
- ✓ Hair Away From Face
- ✓ Glasses Removed
- ✓ Close Up Photos

Do Not Take Photos Yourself
Surgeon will not accept selfie photos as they distort the required image



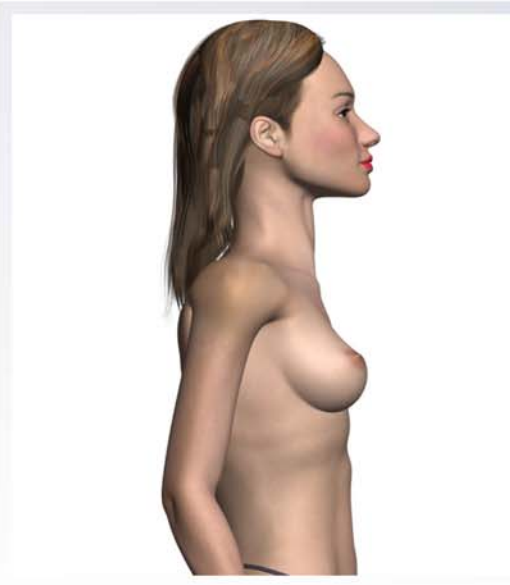
Face Forward
Arms At Side



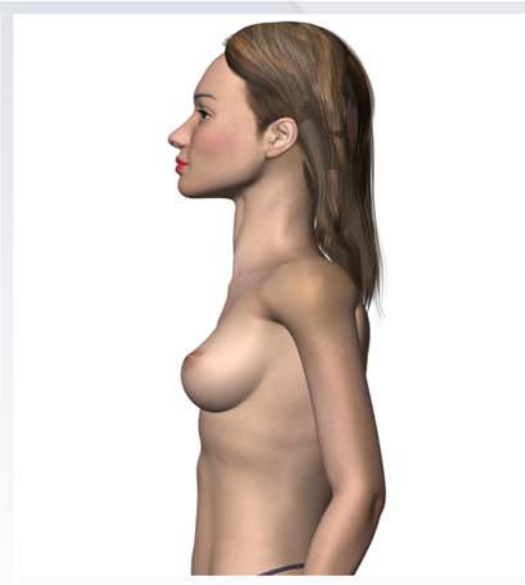
Face Forward
Arms Above Head



Forward Diving
Lean Forward Arms Out



Right Profile
Arms Back at Side



Left Profile
Arms Back at Side



Side Diving
Left and Right Required